

**915 Kearsley Park Blvd.
Flint, MI 48503**



**(810) 235-1402
www.glapinc.com**

INSTRUCTIONS A-9C

Instructions for installing domed or bubble door Windows (OPENING style) in Cessna airplanes

CESSNA MODELS:

182E, 182F, 182G, 182H, 182J, 182K, 182L, 182M, 182N, 182P, 182Q, 182R, 182S, 182T, T182, T182T, R182, TR182

210-5 (205), 210-5A (205A)

206, U206, U206A, U206B, U206C, U206D, U206E, U206F, U206G, 206H, TU206A, TU206B, TU206C, TU206D, TU206E, TU206F, TU206G, T206H, P206, P206A, P206B, P206C, P206D, P206E, TP206A, TP206B, TP206C, TP206D, TP206E

207, 207A, T207, T207A

REIMS AVIATION S.A. MODELS:

F182, FT182, FR182

MATERIALS REQUIRED:

- One of the following domed or bubble windows, Great Lakes Aero Products part number(s):
(LH) W-2905-2, W/T-2905-2, W/G-2905-2, SC-W/T-2905-2, SC-W/G-2905-2 W-2905-4, W/T-2905-4, W/G-2905-4, SC-W/T-2905-4, SC-W/G-2905-4, W-2905-6, W/T-2905-6, W/G-2905-6, SC-W/T-2905-6, or SC-W/G-2905-6,
(RH) W-2906-2, W/T-2906-2, W/G-2906-2, SC-W/T-2906-2, SC-W/G-2906-2, W-2906-4, W/T-2906-4, W/G-2906-4, SC- W/T-2906-4, SC-W/G-2906-4, W-2906-6, W/T-2906-6, W/G-2906-6, SC-W/T-2906-6, or SC-W/G-2906-6
- Placard - PN W-2910 - Supplied
- Blind rivets (I.E. Cherry rivets) - not supplied.
- Sealant - Presstite # 579.6, silicone sealant - I.E. GE Silicone I or II, Dow Corning, or other approved sealant - not supplied.

TOOLS REQUIRED:

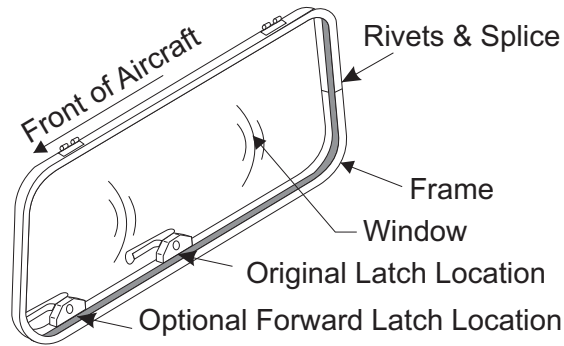
- Power Drill (I.E. Air or Electric)
- Drills or Drill set - proper sizes for blind rivets.
- Blind rivet puller for rivets.

REMOVAL PROCEDURE:

- 1) Window installation may be done with the frame attached to the aircraft or the window assembly may be removed from the aircraft.
- 1A) If the window assembly is to be removed from the aircraft, begin by pulling the hinge pins or drilling the rivets out of the hinges and disconnecting the window stop.
- 2) Drill out the blind rivets on the splice - note - you only have to drill out half the rivets, it is not necessary to remove the splice from both sides. **See FIG A**
- 3) Spread the frame carefully so the old window can be removed with the least amount of bending or damage to the frame. Carefully clean and inspect the frame for any conditions that would create problems in installing the new window.
- 4) Compare the trimmed size of the bubbled window to the one you removed from the frame. Trim if necessary- see attached trimming instructions.

FIG A

Typical Opening Frame Detail

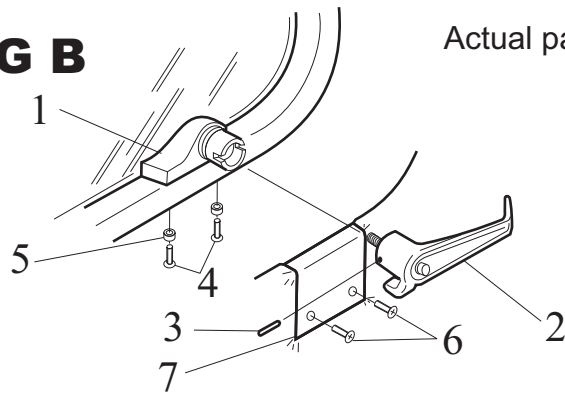


INSTALLATION PROCEDURE:

- 1) For Aircraft manufactured after 1996 weigh both the original window and the new bubble window before installation. Calculate the weight and balance of the aircraft.
NOTE: For aircraft produced in 1986 and prior there should be no change in weight and balance.
- 2) Following the Original Cessna Service manual instructions the window may be installed with GLAP part no. S-001 or Cessna Part number R581529.
NOTE: If the original Rubber U-Channel binds with the window making it difficult to install as there is a slight curve (top to bottom) to the window frame, the installer may use the alternate method (Step 2 alt) for installation. If there is a binding issue using the original style Rubber U-channel may also stress the window in an undesirable way and shorten the life of the window.
- 2 alt) Mask the entire window up to the edge of the bubble and mask window frame or any other parts that may be effected as to assist in cleanup. At the installers option 3M Vinyl Tape 741 or Black Electrical Tape may be used on the edge of the window to protect it during installation. Using 100% Silicone or other approved sealant put a bead into the window channel.
- 3) Install bubble (domed) window, again being careful to not damage the frame. When the new window is in the proper position and the splice is slid together, the blind rivets can be installed.
- 4) The window assembly can be reinstalled back on the aircraft, if it was removed from the aircraft.
- 5) Install placard (Caution: do not open above 105 knots (120 mph)) near the latch either on the window or on an appropriate surface near the latch.
- 6) Fill out the necessary paperwork - I.E. 337 form.

NOTES

- **Aircraft produced 1986 or prior:** No change in weight or balance.
- **Aircraft produced after 1996:** Compare the weight of the original windows and new windows to calculate any weight and balance change. If the new windows were installed without weighing them prior to installation then measure the thickness of the original window, if it is approximately .250" (6mm) thick then the weight of the new window is approximately half.
- The window may be resealed with silicone sealant or other approved sealant from the outside if required - mask the window and the frame to aid in cleanup.
- Please allow 24 or more hours for Silicone or appropriate cure time of other approved sealant before flight.
- There may be a negligible change in airplane performance when the domed windows are installed.
- The change in airflow over the window may cause the frame to leak air, hiss or make other noises at the front of the frame. The following Cessna parts (**See Fig B & C**) may be used to install the latch on the front of the frame if the leakage is objectionable. The new latch should be installed as far forward on the frame as possible but staying on the straight portion of the frame. Use the existing latch as a pattern to install the second latch. **See Fig A**
- If a second latch is desired, the following pages give the part numbers needed to attach a second latch to the window frame and door. As parts become unavailable it may be necessary to either locate them used from a salvage yard, or purchase and modify a later model latch and their associated parts. **See Fig B & Fig C**
- Any of the assemblies may be used on any model aircraft described here on these instructions. The model and serial number information below is for reference if the customer wishes to match the original equipment to their aircraft.
- It may be necessary to slightly modify the interior trim panels and upholstery for some latches and striker plates to function properly..

FIG B

Actual parts may vary from drawings

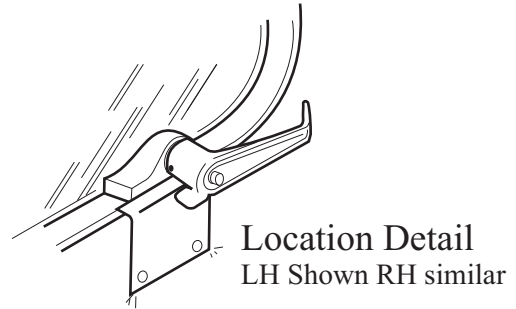
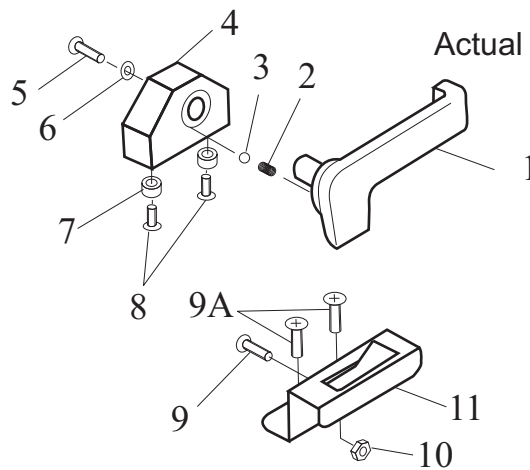


FIG	FIG ITEM	CESSNA PART NUMBER	PART NAME	UNITS PER ASM	USE ON CODE
B	1	1411202-201	Bracket Assembly	1	A
	2	S1483-2 (LH)	Handle	1	A
		S1483-1 (RH)	Handle	1	E
	3	NAS561P3-8	Roll Pin	1	
	4	NAS514P1032-14	Screw	2	
	5	NAS43HT3-34	Spacer	2	
	6	S1021Z8-8	Screw	2	
	7	0700663-1	Plate - Window latch	1	B
		0700685-1	Plate - Window latch	1	C
		0700685-3 (LH)	Striker Plate	1	D
		0700685-4 (RH)	Striker Plate	1	E

CODE	MODEL	SERIAL NUMBERS
A ---	182	18253599 thru 18265965
	F182	F18200001 thru F18200064
	205	205-0001 thru 205-0577
	206, U206	206-0001 thru U20602199
	P206	P206-0001 thru P20600647
	207, T207	20700001 thru 20700414
B ---	182	18253599 thru 18253794
C ---	182	18253795 thru 18262465
	205	205-0001 thru 205-0577
	U206	U20601875 thru U20602199
	207, T207	20700001 thru 20700227
D ---	182	18262466 thru 18265965
	F182	F18200001 thru F18200064
	207, T207	20700228 thru 20700414
E ---	182	18264296 thru 18265965
	F182	F18200001 thru F18200064
	U206, TU206	U20603021 thru U20603549
	207, T207	20700315 thru 20700414

FIG C

Actual parts may vary from drawings

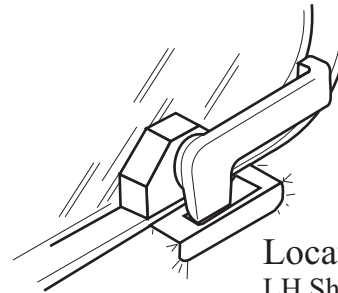
Location Detail
LH Shown RH similar

FIG	FIG ITEM	CESSNA PART NUMBER	PART NAME	UNITS PER ASM	USE ON CODE
C		1217066-1 (LH), -2 (RH)	Latch Assembly	1	A
		1217066-3 or -5 (LH), -4 or -6 (RH)	Latch Assembly	1	B
	1	1217063-1 (LH), -2 (RH)	Handle	1	A
		1217063-7 or -11 (LH), -8 or -10 (RH)	Handle	1	B
	2	MS24585-1020	Spring	1	
	3	S272-5	Ball	1	
	4	1217063-3	Bracket-Latch	1	A
		1217063-9 or -12	Bracket-Latch	1	B
	5	S1931-8	Screw	1	
	6	NAS1149CN832R or AN960C8	Washer	1	A
		NAS1149CN832R	Washer	1	B
	7	NAS43HT3-34	Spacer	2	
	8	NAS514P1032-14	Screw	2	
	9	AN507-832R7	Screw	1	
	9A	AN507-832R6	Screw	2	
	10	MS21044N08	Nut	2	
	11	1217065-1 or -3 (LH), -2 or -4 (RH)	Striker Plate	1	A
		1217065-7 or -9 (LH), -8 or -10 (RH)	Striker plate	1	B

CODE	MODEL	SERIAL NUMBERS
A ----	182, T182	18265966 thru 18268586
	R182, TR182	R18200001 Thru R18202041
	F182	F18200065 & UP
	FR182	FR18200001 thru FR18200070
	U206, TU206	U20603550 thru U20607020
	207, T207	20700415 & UP
B ----	182	18280001 & UP (1996 & UP)
	T182	18208001 & UP
	206H	20608001 & UP
	T206H	T20608001 & UP

NOTE: As Cessna part numbers are Superseded, later (or newer) parts may be used if earlier parts become unavailable.