

915 Kearsley Park Blvd.
Flint, MI 48503



(810) 235-1402
www.glapinc.com

INSTRUCTIONS A-4CM

SUPPLEMENTAL Instructions for Windshield mounted Compass

GLAP Part #	Cessna Model Numbers
W-, W/T-, W/G-	
2071-CM	182E, 182F, 182G
2065-CM	210-5 (205), 210-5A (205A), 206, U206, P206, 210B, 210C, 210D, 210E

NOTES:

- The Following Illustration shows suggested Cessna part numbers which may be used when the Compass is to be mounted to the windshield.
- The wire for the compass may require rerouting to the top of the cabin.
- A hole may need to be drilled into the top of Compass Cup for the wire.
- Small holes may be drilled for the rerouting of the wire as required to the top of the cabin.
- As parts become unavailable, later versions may be used.
- Compatibility of this modification with other previous approved modifications must be determined by the installer.

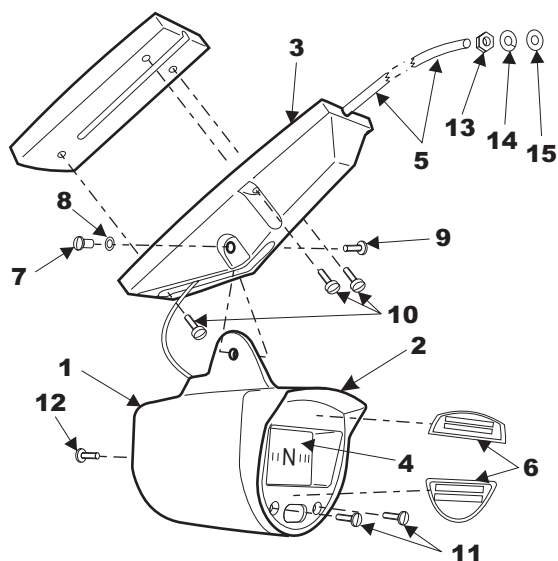


Fig Item	Part Number	Description	Units Req'd	Use on Code
1	0413517-5	Cup	1	
2	0413617-15	Bezel	1	
3	0413517-3	Base	1	
4	C660501-0101	Compass (12 Volt)	1	C
	C660501-0102	Compass (24 Volt)	1	D
5	0713817-1	Tube Assy	1	A
	0713817-4	Tube Assy	1	B
6	0400213-6	Correction Placard	1	
7	D4023X.375	Post	1	
8	AN960010	Washer	1	
9	D366	Screw	1	
10	AN50088-6	Screw	3	
11	MS35199-16	Screw	2	
12	AN5078832R14	Screw	1	
13	S1216-3	Nut	1	
14	NAS620A416L	Lock Washer	1	
15	AN936A416	Washer	1	
	MS363340	Alternate Washer	1	

Code Used On Model Numbers:

A	182E, 182F, 182G
B	206, U206, P206, 205, 205A, 210B, 210C, 210D, 210E
C	*182E, 182F, 182G, 205, 205A, 206, 210B, 210C, 210D
D	(Aircraft which use a 24V Electrical system)

*NOTE: The U206 (sns 0276 thru 0437), P206 (sns 0001 thru 0160) & 210E (sns 58511 thru 58715) use Compass (C660501-0101) as listed above, a new compass should not be necessary, however a newer style mount will be required.

As an ALTERNATE the Following Cessna Part numbers may be used with a C660501-0101 Compass: – not illustrated --

0713813-1 (Mount)	S1570-8-12 (screw)	330 (Bulb 12V) or
0713819-1 (Correction card)	S1571-8-10 (screw)	227 (Bulb 24V)
AN96008 (Washer 2 reqd)	S1570-8-6 (screw 2 reqd)	0713817-1 (Tube Assy 182)
0713817-4 (Tube Assy 205, 206, 210)		